

Sex-Specific Associations between Particulate Matter Exposure and Gene Expression in Independent Discovery and Validation Cohorts of Middle-Aged Men and Women

Karen Vrijens,¹ Ellen Winckelmans,¹ Maria Tsamou,¹ Willy Baeyens,² Patrick De Boever,^{1,3} Danyel Jennen,⁴ Theo M. de Kok,⁴ Elly Den Hond,^{3,5} Wouter Lefebvre,³ Michelle Plusquin,¹ Hans Reynders,⁶ Greet Schoeters,^{3,7,8} Nicolas Van Larebeke,⁹ Charlotte Vanpoucke,¹⁰ Jos Kleinjans,⁴ and Tim S. Nawrot^{1,11}

¹Centre for Environmental Sciences, Hasselt University, Agoralaan-gebouw D, Diepenbeek, 3590, Belgium; ²Department of Analytical and Environmental Chemistry, Free University of Brussels, Brussels, Belgium; ³Environmental Risk and Health Unit, Flemish Institute for Technological Research (VITO), Mol, Belgium; ⁴Department of Toxicogenomics, Maastricht University, Maastricht, The Netherlands; ⁵Provincial Institute for Hygiene, Antwerp, Belgium; ⁶Flemish Government; ⁷Environment, Nature and Energy Department, Flemish Government, Brussels, Belgium; ⁸Department of Biomedical Sciences, University of Antwerp, Antwerp, Belgium; ⁹University of Southern Denmark, Institute of Public Health, Department of Environmental Medicine, Odense, Denmark; ¹⁰Department of Radiotherapy and Nuclear Medicine, Ghent University, Ghent, Belgium; ¹¹Belgian Interregional Environment Agency (IRCEL), Brussels, Belgium; ¹¹Department of Public Health & Primary Care, Leuven University, Leuven, Belgium (**AU: Pls confirm changes are correct?*)

BACKGROUND: Particulate matter (PM) exposure leads to premature death, mainly due to respiratory and cardiovascular diseases.

OBJECTIVES: Identification of transcriptomic biomarkers of air pollution exposure and effect in a healthy adult population.

METHODS: Microarray analyses were performed in 98 healthy volunteers (48 men, 50 women). The expression of eight sex-specific candidate biomarker genes (significantly associated with PM₁₀ in the discovery cohort and with a reported link to air pollution-related disease) was measured with qPCR in an independent validation cohort (75 men, 94 women). Pathway analysis was performed using Gene Set Enrichment Analysis. Average daily PM_{2.5} and PM₁₀ exposures over 2-years were estimated for each participant's residential address using spatiotemporal interpolation in combination with a dispersion model.

RESULTS: Average long-term PM₁₀ was 25.9 (± 5.4) and 23.7 (± 2.3) µg/m³ in the discovery and validation cohorts, respectively. In discovery analysis, associations between PM₁₀ and the expression of individual genes differed by sex. In the validation cohort, long-term PM₁₀ was associated with the expression of *DNAJB5* and *EAPP* in men and *ARHGAP4* ($p = 0.053$) in women. *AKAP6* and *LIMK1* were significantly associated with PM₁₀ in women, although associations differed in direction between the discovery and validation cohorts. Expression of the eight candidate genes in the discovery cohort differentiated between validation cohort participants with high vs low PM₁₀ exposure (area under the receiver operating curve = 0.92; 95% CI: 0.85, 1.00; $p = 0.0002$) in men, 0.86; 95% CI: 0.76, 0.96; $p = 0.004$ in women).

CONCLUSIONS: Expression of the sex-specific candidate genes identified in the discovery population predicted PM₁₀ exposure in an independent cohort of adults from the same area. Confirmation in other populations may further support this as a new approach for exposure assessment, and may contribute to the discovery of molecular mechanisms for PM-induced health effects.

CITATION: Vrijens K, Winckelmans E, Tsamou M, Baeyens W, De Boever P, Jennen D, de Kok TM, Den Hond E, Lefebvre W, Plusquin M, Reynders H, Schoeters G, Van Larebeke N, Vanpoucke C, Kleinjans J, Nawrot TS. 2017. Sex-specific associations between particulate matter exposure and gene expression in independent discovery and validation cohorts of middle-aged men and women. *Environ Health Perspect* 125:0000–0000; <http://dx.doi.org/10.1289/EHP370>

Background

Particulate matter (PM) is a complex mixture of small particles and liquid droplets that contains a number of components, including acids, organic chemicals, metals, and soil or dust particles. PM exposure is known to increase overall mortality and morbidity, mainly due to its effect on the cardiorespiratory system (Alfaro-Moreno et al. 2007; Pope et al. 2004). Exposure to PM may disturb normal physiological pathways that maintain homeostasis and this may activate cellular processes that mediate the adverse effects of PM (Kleensang et al. 2014). Gene expression changes play an important role in the activation of pathways of toxicity and gene signatures have the potential to serve as biomarkers

of exposure (van Leeuwen et al. 2008; van Breda et al. 2015) and recent reports demonstrate their potential use as biomarkers of effect (La Rocca et al. 2014; Fink et al. 2014). As it has been shown previously that transcriptomic responses to diverse environmental stimuli (i.e., chemical exposure, smoking etc.) can be significantly different between men and women (De Coster et al. 2013; Paul and Amundson 2014), we have opted to perform a sex-specific analysis.

Several studies have suggested that elevated oxidative stress may mediate toxic effects of air pollutants (Donaldson et al. 2005; Nel et al. 2001). The systemic inflammatory response following acute inhalation exposure to PM can induce leukocytosis and

monocyte release from the bone marrow (Fujii et al. 2002). Controlled exposure studies of recent diesel exhaust exposure (Pettit et al. 2012) and recent exposure to ultra-fine particles (Huang et al. 2010) have reported evidence of altered gene expression in leukocytes but, to our knowledge, associations between patterns of gene expression and long-term particulate air pollution have not been studied in general populations.

Materials and Methods

Study Design

As our goal was to identify transcriptomic biomarkers of exposure and effect in a healthy adult population, we started by applying microarray analysis in a discovery cohort of 98 adults for which we modelled particulate matter exposure. On the resulting dataset containing significantly modulated genes and

Address correspondence to T.S. Nawrot, Centre for Environmental Sciences, Hasselt University, Agoralaan gebouw D, B-3590 Diepenbeek, Belgium. Telephone: 0032/11-26.83.82. E-mail: tim.nawrot@uhasselt.be

Supplemental Material is available online (<http://dx.doi.org/10.1289/EHP370>).

The project was funded by the Environment, Nature and Energy Department of the Flemish government (LNE/OL201100023/13034/M&G), Steunpunt Milieu- en Gezondheid and European Research Council (ERC-2012-StG 310898). K.V. is a postdoctoral Fellow of the Research Foundation–Flanders (12D7714N). (**AU: Correct?*)

The authors declare they have no actual or potential competing financial interests. (**AU: pls confirm EHP's preferred CFI text is accurate*)

Received: 21 December 2015; Revised: 12 August 2016; Accepted: 22 August 2016; Published: 14 October 2016.

Note to readers with disabilities: EHP strives to ensure that all journal content is accessible to all readers. However, some figures and Supplemental Material published in EHP articles may not conform to 508 standards due to the complexity of the information being presented. If you need assistance accessing journal content, please contact ehponline@niehs.nih.gov. Our staff will work with you to assess and meet your accessibility needs within 3 working days.

pathways, we applied a literature and bio-informatics approach to identify potential exposure effect biomarkers. Subsequently, these were validated using qPCR analysis in an independent cohort with similar characteristics as the discovery population (Figure 1). Study protocols for the discovery and validation cohort were approved by the Institutional Review Board and the Ethical Committee of Antwerp University [**AU: pls confirm that this is the official name for the IRB and the Ethical Committee?**) and informed consent was obtained from all participants.

Study Population

Discovery cohort. The original study population was described previously (van Leeuwen et al. 2008) and consisted of 398 subjects participants [**AU: correct?**) from eight different regions of residence in Flanders (Belgium), as part of the first Flemish Environment and Health Survey (FLEHS I) during the period 2001–2006. Participants were recruited in several communities based on random sampling. Inclusion criteria were age 50–65 years, living in Flanders > 5 years, and being able to complete questionnaires in Dutch. Prior to blood collection, informed consent was obtained from all individuals. A subset of 98 samples was selected for microarray analysis based on previously measured exposure levels to several pollutants including cadmium, lead, polychlorinated biphenyls (PCBs) (138, 153, and 180), dioxins, polycyclic aromatic hydrocarbons (PAHs), and benzene. The overall exposure to these pollutants was estimated using a z-score for each pollutant, and study subjects participants with both low- and high- exposure levels were chosen for inclusion. Z-scores were not correlated with long-term PM₁₀ exposure ($r^2 = 0.0012$). Smokers were excluded from the study population. PaxgenePAXgene tubes (PreAnalytiX GmbH, Hombrechtikon, Switzerland) were used for RNA collection.

Validation cohort. The quantitative polymerase chain reaction (qPCR) [**AU: correct for qPCR? If no, pls define the term**) validation study was performed in an independent cohort of 175 adults being who were part of the third Flemish Environment and Health Survey (FLEHS III) during the period 2012–2015. Healthy volunteers who were between 50 and 65 years of age, living at the same residential address for at least 10 years, and being able to complete questionnaires in Dutch were recruited through registers of general medical practices. Prior to blood collection, informed consent was obtained from all individuals. Participants completed a questionnaire covering age, sex, and smoking habits, among other items [**AU: do you

mean “other demographic characteristics?”**]; they donated blood and urine samples; and subclinical measurements including height, weight, and blood pressure were determined. The sampling campaign lasted from May 2014 until the end of the year [**AU: for end of year, do you mean 30 December 2014?**)2014. We used PAXgenePaxgene tubes (PreAnalytiX GmbH, Hombrechtikon, Switzerland) to stabilize whole blood RNA for storage.

Exposure Estimates

The PM₁₀ and PM_{2.5} (10 and 2.5 μm in aerodynamic diameter) concentrations for participants’ residential addresses were calculated using a spatial temporal interpolation method (Kriging) that takes into account land cover data from satellite images [CORINE (coordination of information on the environment)Corine land cover data set; <http://www.eea.europa.eu/publications/COR0-landcover>] [**AU: changes correct?**)If data set info is not described in Maiheu, Jacobs, Janssen et al., pls add a version number and title for the data set used**)for interpolating the measurement data of the monitoring stations from the Belgian telemetric air quality network as described previously (Maiheu et al. 2013; Jacobs et al. 2010; Janssen et al. 2008). Validation statistics of the interpolation tool gave a temporal explained variance of

more than ≥ 0.7 for hourly PM₁₀ averages as well as for annual mean PM₁₀ (Maiheu et al. 2013). In combination with a dispersion model—the Immission Frequency Distribution Model (IFDM)) [**AU: correct for IFDM?**) using emissions from line sources and point sources, the model chain provides daily PM₁₀ and PM_{2.5} values on a 25 × 25 m receptor grid (Lefebvre et al. 2013). Our model is based on input data from 38 monitoring stations in the study area. The Initiative on Harmonisation within Atmospheric Dispersion Modelling for Regulatory Use in Europe was the incentive for intensive model intercomparison. IFDM was thoroughly compared with other models currently in use for regulatory purposes in Europe (Olesen 1995; Maes et al. 1995; Cosemans et al. 1995, 2001; Mensink et al. and Maes 1996). (**AU: Correct?**) ; Cosemans et al. 2001).

Mean daily temperatures and relative humidity for the study region were provided by the Royal Meteorological Institute (Brussels, Belgium), and apparent temperature was calculated (Steadman 1979; Kalkstein and Valimont 1986).

All our estimates were annual mean exposures over a 2-year period because we were interested in developing biomarkers for long-term exposure. For the discovery cohort, annual means were based on 2011–2012 as these were the earliest years for which detailed 25 × 25 m grid information became available. Distribution patterns were used for the year

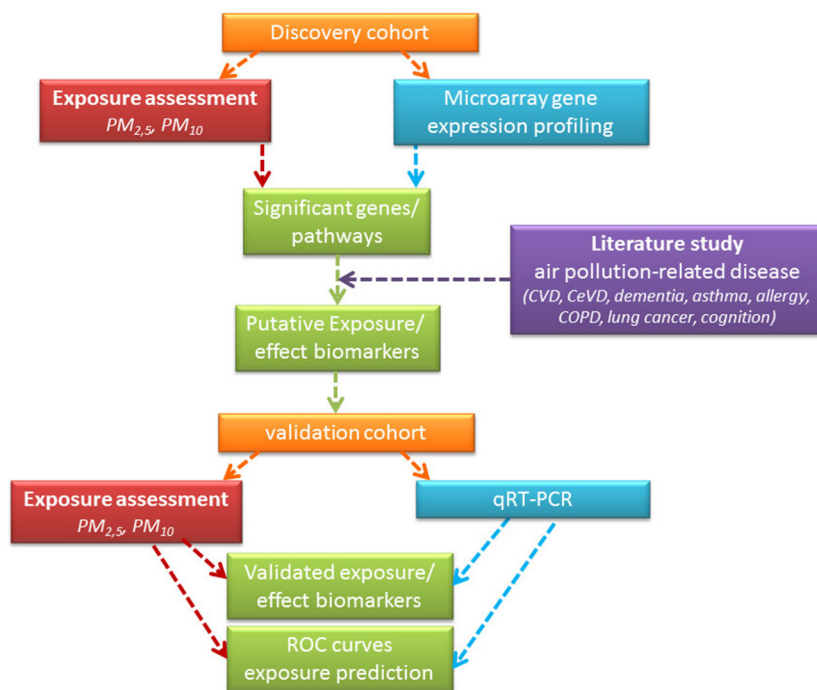


Figure 1. Schematic representation of the application of the modified version of the meet-in-the middle approach to identify biomarkers of disease.

CVD = cardiovascular disease, CeVD = cerebrovascular disease, COPD = chronic obstructive pulmonary disease.

2008. We assumed that relative differences in annual mean concentrations of particulate matter were generally consistent from year to year. For the validation cohort, annual means were based on the 2 years prior to blood sampling (i.e., 2012–2013).

RNA Isolation

Total RNA was isolated from 2.5 mL whole blood from PAXgene Blood RNA vacutainers using the PAXgene Blood RNA system (PreAnalytiX, Qiagen, Hilden, Germany), according to the manufacturer's instructions. A globin reduction assay (GLOBINclear™ Kit by Ambion, Austin, TX) was performed in order to remove hemoglobin mRNA from samples that were submitted to microarray analysis. RNA integrity was assessed using the BioAnalyzer (Agilent, Palo Alto, CA) and purity was measured spectrophotometrically. Labeled samples were checked for specific activity and dye incorporation.

Microarray Preparation and Hybridization

We used 0.2 µg total RNA from each sample was used to synthesize dye-labeled cRNA (Cy3) following the Agilent one-color Quick-Amp labeling protocol (Agilent Technologies). Individual samples were hybridized on Agilent 4 × 44 K Whole Human Genome microarrays (design ID 014850).

Microarray Data Analysis

Microarrays were scanned on an Agilent G2505C DNA Microarray Scanner (Agilent Technologies, Amstelveen, Netherlands). Raw data on pixel intensities were extracted from the **scan** **[**AU: scanned images?]**** images using Agilent Feature Extraction Software (version 10.7.3.1; Agilent Technologies, Amstelveen, Netherlands), protocol GE1_107.sep09. Raw data were preprocessed using an in-house developed quality control pipeline in R (version #; R Project for Statistical Computing) **[**AU: Please provide version number**]** as follows: local background correction, flagging of bad spots, controls and spots with intensities below background, log₂ transformation and quantile normalization. The R-scripts of the pipeline and additional information on the flagging can be found at https://github.com/BiGCAT-UM/arrayQC_Module. From the processed data files genes were omitted showing more than 30% flagged data, after which the data files were transferred to the Gene Expression Pattern Analysis Suite, GEPAS 2010 (Montaner et al. 2006) for further preprocessing, including merging replicate probes (based on median), and imputing missing values by means of K-nearest neighbor imputation (K = 15). Filtering for flat peaks was used with root

mean square value 0.25. The filtered data, containing 28,786 genes, were used for further statistical analyses. Microarray gene expression data were analyzed **and** stratified for sex **[**AU: correct to add "and" **]**. In the original microarray data that set initially 28,786 unique Agilent probe IDs (out of 43,376 Agilent probe IDs) were annotated to 22,390 EntrezGene IDs. In case of multiple replicates (i.e., multiple probes for the same gene), the replicate with highest interquartile range (IQR) in relative gene expression was selected. This resulted in 15,589 unique EntrezGene IDs.

Gene Expression Analysis

Using linear regression models adjusted for age, body mass index (BMI), socioeconomic status (SES, classified in **three** groups: no high school degree, high school degree, or further education degree), **daytime** and **season** **[**AU: pls explain or define what you mean by "daytime" and "season" **]** of blood sampling, we obtained estimates for each gene as the log₂-fold change in gene expression for an increment of 5 µg/m³ in exposure. *p*-Values < 0.05 were considered statistically significant. *p*-Values were corrected for multiplicity using the Benjamini–Hochberg false discovery rate (FDR) correction. *p*-Values corrected for multiple testing are referred to as *q*-values.

Pathway Analysis

Gene Set Enrichment Analysis was performed utilizing the online pathway analysis tool Consensus Pathway Data Base (CPDB) (<http://consensuspathdb.org/>). CPDB contains ~ 5,200 pathways including protein complexes, metabolic, **signaling**, and gene regulatory pathways, **[**AU: pls confirm that "signaling" is the 3rd pathway in your series of 4? If so, EHP prefers to use a comma before "and" for clarity**]** as well as drug-target interactions. Data originate from 32 public resources curated from the literature (Kamburov et al. 2012–2013). Gene Set Enrichment Analysis was performed in a sex-specific manner using the log₂-fold changes of the gene expression data for all genes analyzed at the gene expression level, without preselection. For every predefined gene set in each pathway, a Wilcoxon signed-rank test was calculated, testing the null hypothesis that the distribution of their fold changes was around zero. As input, all genes without *a priori* selection (EntrezGene IDs) were uploaded with their fold changes in their gene expression. We selected the biological processes using pathways as output. The *p*-values were corrected for multiplicity and were presented as *q*-values. We defined significant biological

processes and pathways by a threshold on the adjusted *p*-value (*q* < 0.05 or FDR 5%) and we included gene sets with a size between 5 and 100 members.

Selection of Potential Exposure/Effect Biomarker Genes

We used a modified version of the meet-in-the-middle approach for biomarker identification in relation to clinical relevance (Vineis et al. 2013), a schematic representation is shown in Figure 1. We first identified the top 50 genes associated with PM₁₀ (i.e., with the smallest uncorrected *p*-values) in men and women, respectively, then performed a literature search using PubMed and ScienceDirect to identify genes within each sex-specific set that have been associated with air pollution-related health outcomes. Specifically, we searched for the name of each gene in combination with any of the following diseases or processes: allergy (Magnussen et al. 1993), chronic obstructive pulmonary disease (COPD) (Ko et al. 2007), asthma (Bowatte et al. 2015), lung cancer (Raaschou-Nielsen et al. 2011), cardiovascular disease (CVD) (Mills et al. 2009), cerebrovascular disease (CeVD) (Johnson et al. 2010), Alzheimer's disease (Finkelstein and Jerrett 2007) **[**AU: Correct?]**** and cognition (Dadvand et al. 2015). Genes with lowest *p*-values and proven link to **AP** **[**AU: pls clarify: pls define "AP" at first mention?]****-related **disease** **[**AU: diseases?]**** were chosen for validation. For men, *DNAJB5*, *RAC3*, *EAPP*, *HDLBP*, *PRG2*, *PER1*, *PIK3R1*, and *SLA2* were selected for validation, whereas for women the gene list for validation included genes *AKAP6*, *LIMK1*, *SIRT7*, *ARHGPAP4*, *ATG16L2*, *TPM3*, *5-HTR1B*, and *PYGO2*.

Validation of Candidate Biomarker Genes by qPCR

qPCR. Total RNA was reverse transcribed into cDNA by means of the GoScript Reverse Transcription System (Promega, Madison, WI, USA) using a Veriti 96 well Thermal cycler (TC-5000, Techne, Burlington, NJ, USA). A maximum of 3 µg of total RNA was used as input, and we used the protocol with an equal amount of oligo(dT) and random hexamer primers according to the manufacturer's instructions. cDNA was stored at –20°C until further measurements. A quantitative real-time polymerase chain reaction (qPCR) was set up by adding 2 µL of a 10 ng/µL dilution of cDNA together with TaqMan Fast Advanced Master Mix (Life Technologies, Foster City, CA, USA) and PrimeTime™ assay (Integrated DNA Technologies, Coralville, IA, USA), in a final reaction volume of 10 µL. Standard cycling conditions were used to analyze

samples in a 7900HT Fast Real-Time PCR system (Life Technologies, Foster City, CA, USA). Expression of eight candidate biomarker genes for each sex **[**AU: EHP prefers to use "sex" in its research articles**]** was studied and Cq values were collected with SDS 2.3 software. Minimum Information on qPCR Experiments (MIQE) guidelines were taken into account (Bustin et al. 2009). Amplification efficiencies were between 90% and 110% for all assays. Raw data were processed to normalized relative gene expression values with qBase plus (Biogazelle, Zwijnaarde, Belgium) (Hellemans et al. 2007). Triplicates were run for all samples; technical replicates were included when the difference in Cq value was < 0.5. A set of three genes was used for data normalization, namely Hypoxanthine Phosphoribosyltransferase 1 (*HPRT*), Importin 8 (*IPO8*) and tyrosine 3-monooxygenase/tryptophan 5-monooxygenase activation protein, zeta (*YWHAZ*).

Data analysis. Statistical analyses were carried out using SAS software (version 9.3, SAS Institute Inc., Cary, NC, USA). Continuous data were presented as mean \pm standard deviation (SD) and categorical data as percentages (%) and frequencies. Models were adjusted for age, body mass index (BMI), SES, smoking (categorized as smokers, former smokers and never smokers), white blood cell counts (absolute number of leukocytes and percentage of neutrophils), time of day (< 12 pm, 12–3 pm, 3–6 pm, > 8 pm (< 1200 hours, 1200–1500 hours, 1500–1800 hours, > 2000 hours) and season (October–March or April–September) of blood sampling. *p*-Values < 0.05 were considered statistically significant, *p*-values corrected for multiple testing referred to as *q*-values. We plotted residuals for each gene to check whether significance was driven by outliers, these were removed where appropriate. To indicate significance of selected biomarker genes for each sex, we included an interaction term for sex in our main analysis. *p*-Values for the interaction term sex were calculated for all genes under study, not only those that were significant.

In validation analysis, we examined the association between gene expression and PM₁₀ exposure, stratified by sex using linear regression models for the 8 eight selected genes for each sex.

ROC Curves Exposure Prediction

We calculated the ability to predict PM₁₀ exposure based on expression of the set of 8 eight validated genes significantly associated with PM₁₀ exposure in the discovery cohort for each sex. For this purpose, we estimated sensitivity and specificity of the prediction

using receiver operating characteristic (ROC) plots. Subjects were stratified according to their long-term PM₁₀ exposure levels with the 75th percentile as cut-off point (25.7 $\mu\text{g}/\text{m}^3$ annual mean for women, 24.5 $\mu\text{g}/\text{m}^3$ for men). All analyses were repeated similarly using long-term PM_{2.5} exposure levels, the cut-off point for long-term PM_{2.5} exposure, or the 75th percentile of exposure was 16.0 $\mu\text{g}/\text{m}^3$ for both men and women.

Results

Population Characteristics

Table 1 lists the characteristics of the study cohorts. All participants were of European origin. Distribution of sex, SES, age and BMI as well as exposure did not differ between the discovery and validation cohort. Both cohorts included just less than 50% men and age averaged (SD) 57.9 (4.3) years. Season of sampling differed between both cohorts, with sampling for the discovery phase of the study mainly occurring throughout the warm months of the year, whereas sampling for the validation study was mainly performed during the cold season. However, since we are working with average annual exposures over a 2-year period, this approach in itself corrects for the differences across seasons. Blood sampling was done ≤ 1500 hours ± 3 pm for all discovery cohort participants, while most validation cohort participants had samples drawn after 1500 hours ± 3 pm. The discovery cohort

consisted only of non-smokers, whereas the validation cohort included smokers (*n* = 21).

Gene Level Analysis

Table 2 displays the 20 top genes for PM₁₀ and PM_{2.5} exposure in men and women. Excel File Tables S1–S4 display the extended top 50 lists for each exposure/sex combination. An overview on the total number of significant genes identified in our analysis, indicating the overlap between men and women, is given in **Figure 2**. For 199 gene transcripts we noticed significant sex by particulate matter exposure (PM₁₀) interactions (data not shown). The corresponding number of gene transcripts for PM_{2.5} with a significant sex by exposure interaction was 601 (data not shown). In men, there were significant associations between 47 genes and PM₁₀ only, 149 genes and PM_{2.5} only, and there were 92 genes associated with both exposures. In women there were significant associations between 91 genes and PM₁₀ only, 1,067 genes and PM_{2.5} only, and there were 498 genes associated with both exposures. We identified two genes in common between long-term PM₁₀ exposure in men and women, namely *RAC3* and *DNAJB5*, respectively ranked as the 290th and 331st gene most significant genes with PM₁₀ exposure in women (out of 592 genes). Furthermore *RAC3* was also significantly associated with long-term PM_{2.5} exposure in men and *DNAJB5* with long-term PM_{2.5}

Table 1. Study population and exposure characteristics.

| Characteristics | Discovery cohort Men (<i>n</i> = 48) | Validation cohort Men (<i>n</i> = 75) | Discovery cohort Women (<i>n</i> = 50) | Validation cohort Women (<i>n</i> = 94) |
|---------------------------------------|--|---|--|---|
| Personal | | | | |
| Age, years | 58.0 \pm 4.5 | 58.0 \pm 4.1 | 57.8 \pm 4.2 | 58.1 \pm 4.0 |
| Body mass index, kg/m ² | 27.4 \pm 3.5 | 26.1 \pm 3.8 | 25.8 \pm 3.7 | 25.5 \pm 4.7 |
| Socioeconomic status | | | | |
| Low | 20 (41.7) | 14 (18.7) | 28 (56.0) | 23 (24.5) |
| Medium | 15 (31.3) | 26 (34.7) | 7 (14.0) | 16 (17.0) |
| High | 13 (27.1) | 35 (46.7) | 15 (30.0) | 55 (58.5) |
| Smoking status | | | | |
| Non-smokers | 48 (100.0) | 25 (33.3) | 50 (100.0) | 49 (52.1) |
| Former smoker | — | 43 (57.3) | — | 31 (33) |
| Current smoker | — | 7 (9.3) | — | 14 (14.9) |
| Season of blood sampling | | | | |
| Cold (October–March) | 40 (83.3) | 27 (36.0) | 40 (80.0) | 40 (42.6) |
| Warm (April–September) | 8 (16.7) | 48 (64.0) | 10 (20.0) | 54 (57.4) |
| Time of blood sampling | | | | |
| < 1200 hours ± 2 pm | 41 (85.4) | 0 (0.0) | 44 (88.0) | 7 (7.5) |
| 1200–1500 hours ± 2 pm ± 3 pm | 7 (14.6) | 20 (26.7) | 6 (12.0) | 25 (26.6) |
| 1500–1800 hours ± 3 pm ± 6 pm | 0 (0.0) | 32 (42.7) | 0 (0.0) | 43 (45.7) |
| > 2000 hours ± 8 pm | 0 (0.0) | 23 (30.7) | 0 (0.0) | 19 (20.2) |
| White blood cell count | | | | |
| Leukocytes (#/ μL) | — | 6981.5 \pm 1632.1 | — | 6981.5 \pm 1632.1 |
| Neutrophils (%) | — | 56.8 \pm 8.1 | — | 56.8 \pm 8.1 |
| Exposure ($\mu\text{g}/\text{m}^3$) | | | | |
| PM ₁₀ long-term | 25.8 (21.5–30.4) | 23.1 (20.3–27.4) | 26.0 (20.5–35.3) | 24.2 (20.4–28.2) |
| PM _{2.5} long-term | 17.7 (15.5–20.8) | 15.5 (14.5–17.6) | 17.8 (15.4–20.9) | 16.0 (14.7–18.3) |

Note: Data are mean \pm SE or number (%), exposure data are mean (5–95th percentile). **[**AU: pls define what "—" means?]****

exposure in women. We did not observe any significant FDR-corrected q -values in the discovery phase of our study.

Pathway Analysis

There were 1,251 and 966 pathways significantly associated with PM₁₀ and PM_{2.5}, respectively, in men, and 280 and 182 pathways significantly associated with PM₁₀ and PM_{2.5} in women, based on uncorrected p -values. The top 5 identified pathways for each indicator of exposure are summarized in Table 3.

Long-term PM₁₀ exposure in men is associated with response to elevated platelet cytosolic Ca²⁺, the prolactin signaling pathway and platelet degranulation. The 5th top significant pathway in association with PM₁₀ exposure in men is signaling by insulin receptor, which ranks 4th when analyzing long-term PM_{2.5} exposure. Other pathways associated with PM_{2.5} exposure in men are cell-cell communication and signaling by Type 1 Insulin-like Growth Factor and Insulin receptor signaling cascade. For women, long-term PM₁₀ exposure was associated with, in descending order of significance, respiratory electron transport, packaging of telomere ends, electron transport chain, respiratory electron transport and telomere maintenance. PM_{2.5} exposure was associated with respiratory electron transport, and the proteasome in women (Table 3).

Transcriptome Signature in Relation to Long-Term Exposure

We selected eight genes that were significantly ($p < 0.05$) associated with long-term PM₁₀ exposure in the microarray study and have

a published link with air pollution-related disease (Table 4) for validation in an independent cohort. Of these we could confirm (i.e. they were also significantly associated with PM₁₀ in the validation cohort based on uncorrected p -values, and associations were in the same direction as in the discovery cohort) two out of eight genes for men [DnaJ homolog, subfamily B, member 5 (*DNAJB5*), and E2F associated phosphoprotein (*EAPP*)] and one out of eight genes for women to be [Rho GTPase Activating protein 4 (*ARHGAP4*) borderline significantly ($p = 0.0535$) associated with PM₁₀ exposure (Table 4). *AKAP6* ($p = 0.02$) and *LIMK1* ($p = 0.006$) were significantly associated with PM₁₀ in women in the validation cohort, albeit with significantly lower

expression instead of higher expression as in the discovery cohort. We also tested the same sets of eight genes for each sex for associations with PM_{2.5} exposure in the validation-cohort, since all but one of the candidate genes (*PYGO2* in women, which also was not significant for PM₁₀ in the discovery cohort) were significantly associated with long-term PM_{2.5} exposure in the discovery cohort. For PM_{2.5} exposure, we could confirm two out of eight genes [*DNAJB5* (borderline significant, $p = 0.059$) and *EAPP*] for men and four out of eight genes for women [*ARHGAP4*, *PYGO2*, sirtuin 7 (*SIRT7*) and Autophagy related 16-like 2 (*ATG16L2*)] (see Table S1). Excluding 21 current smokers (14 of 94 women and 7 of 75 men) from the validation cohort did not alter our conclusions, based on

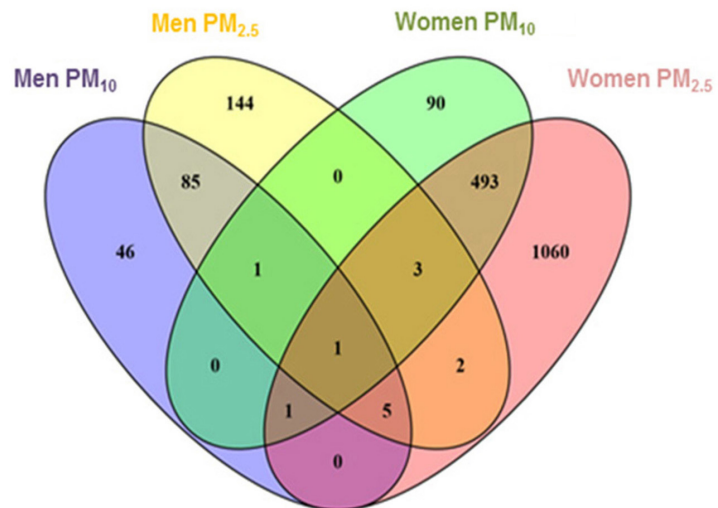


Figure 2. Venn diagram showing the overlap of all genes significantly associated with long-term PM₁₀ and PM_{2.5} exposure in men and women in the discovery cohort.

Table 2. Top 20 significant genes in association with 5-μg/m³ increase in long-term PM₁₀ and PM_{2.5} exposure for men and women.

| Rank no. gene | Men | | | | Women | | | |
|------------------|------------------|-------------------|-------------------|-------------------|------------------|-------------------|-------------------|-------------------|
| | PM ₁₀ | | PM _{2.5} | | PM ₁₀ | | PM _{2.5} | |
| | Gene | FC (95% CI) | Gene | FC (95% CI) | Gene | FC (95% CI) | Gene | FC (95% CI) |
| 1 | <i>EAPP</i> | 1.15 (1.07, 1.24) | <i>ISL2</i> | 2.45 (1.58, 3.78) | <i>ATG16L2</i> | 0.81 (0.73, 0.90) | <i>EFNB1</i> | 0.64 (0.53, 0.77) |
| 2 | <i>DCTN6</i> | 1.23 (1.10, 1.38) | <i>HDLBP</i> | 1.31 (1.14, 1.50) | <i>EFNB1</i> | 0.79 (0.69, 0.89) | <i>SLC6A7</i> | 1.52 (1.25, 1.86) |
| 3 | <i>DNAJB5</i> | 1.36 (1.14, 1.63) | <i>B3GNT3</i> | 1.42 (1.18, 1.70) | <i>SYTL1</i> | 0.86 (0.79, 0.93) | <i>FXN</i> | 0.73 (0.62, 0.85) |
| 4 | <i>ISL2</i> | 1.55 (1.17, 2.06) | <i>RNF144</i> | 1.83 (1.28, 2.62) | <i>SMG5</i> | 0.84 (0.76, 0.92) | <i>SFPQ</i> | 1.41 (1.18, 1.67) |
| 5 | <i>KIAA1914</i> | 1.23 (1.07, 1.42) | <i>ATOH8</i> | 2.24 (1.37, 3.66) | <i>TBC1D10C</i> | 0.85 (0.78, 0.93) | <i>NACAL</i> | 0.69 (0.58, 0.84) |
| 6 | <i>HDLBP</i> | 1.14 (1.04, 1.24) | <i>RAC3</i> | 1.62 (1.21, 2.18) | <i>NACAL</i> | 0.81 (0.72, 0.91) | <i>ATG16L2</i> | 0.72 (0.61, 0.86) |
| 7 | <i>B3GNT3</i> | 1.19 (1.06, 1.34) | <i>ADCK1</i> | 1.49 (1.17, 1.91) | <i>NFKBIE</i> | 0.85 (0.78, 0.93) | <i>SLC24A2</i> | 1.73 (1.28, 2.32) |
| 8 | <i>ATOH8</i> | 1.55 (1.14, 2.10) | <i>DNAJB5</i> | 1.62 (1.20, 2.18) | <i>CEMP1</i> | 0.80 (0.70, 0.91) | <i>THEX1</i> | 0.34 (0.19, 0.62) |
| 9 | <i>LSM12</i> | 0.86 (0.77, 0.95) | <i>ALX3</i> | 1.40 (1.13, 1.73) | <i>DCUN1D2</i> | 0.84 (0.76, 0.93) | <i>TBC1D13</i> | 0.78 (0.68, 0.90) |
| 10 | <i>ZNF187</i> | 1.16 (1.04, 1.28) | <i>MAN2A2</i> | 1.39 (1.13, 1.72) | <i>SLC6A7</i> | 1.25 (1.10, 1.43) | <i>VAPB</i> | 1.21 (1.09, 1.35) |
| 11 | <i>ARHGAP25</i> | 1.11 (1.03, 1.20) | <i>DCTN6</i> | 1.35 (1.11, 1.64) | <i>DHRX</i> | 1.21 (1.08, 1.36) | <i>TPM3</i> | 0.44 (0.28, 0.70) |
| 12 | <i>SERF1B</i> | 0.83 (0.72, 0.95) | <i>DAK</i> | 1.34 (1.10, 1.64) | <i>TBC1D13</i> | 0.86 (0.79, 0.94) | <i>CYB5D1</i> | 0.39 (0.23, 0.67) |
| 13 | <i>ANXA1</i> | 1.19 (1.05, 1.36) | <i>PER1</i> | 1.37 (1.11, 1.69) | <i>SFPQ</i> | 1.21 (1.08, 1.35) | <i>ZNF77</i> | 0.61 (0.46, 0.81) |
| 14 | <i>TKTL1</i> | 1.36 (1.09, 1.71) | <i>GUCA2B</i> | 1.78 (1.20, 2.62) | <i>MAPK3</i> | 1.19 (1.07, 1.32) | <i>GABRD</i> | 0.40 (0.24, 0.67) |
| 15 | <i>PRG2</i> | 1.29 (1.07, 1.56) | <i>ATXN7L3</i> | 1.30 (1.09, 1.55) | <i>ZFYVE27</i> | 0.91 (0.86, 0.96) | <i>NFKBIE</i> | 0.78 (0.68, 0.90) |
| 16 | <i>PER1</i> | 1.19 (1.05, 1.36) | <i>LSM12</i> | 0.77 (0.64, 0.92) | <i>SLC39A2</i> | 1.32 (1.11, 1.55) | <i>CEACAM3</i> | 1.67 (1.24, 2.23) |
| 17 | <i>GUCA2B</i> | 1.38 (1.09, 1.75) | <i>PRG2</i> | 1.57 (1.15, 2.13) | <i>TSPAN4</i> | 1.37 (1.13, 1.65) | <i>TSPAN4</i> | 1.69 (1.25, 2.28) |
| 18 | <i>ST14</i> | 1.20 (1.05, 1.37) | <i>ABL2</i> | 1.40 (1.11, 1.78) | <i>DNAJC5</i> | 0.87 (0.81, 0.95) | <i>GPR137</i> | 0.64 (0.50, 0.83) |
| 19 | <i>CDV3</i> | 0.84 (0.73, 0.96) | <i>MAST3</i> | 1.27 (1.07, 1.49) | <i>MIA</i> | 0.82 (0.73, 0.93) | <i>DNAJC5</i> | 0.80 (0.70, 0.91) |
| 20 | <i>TTC30B</i> | 1.20 (1.04, 1.37) | <i>PIK3R1</i> | 1.46 (1.12, 1.89) | <i>CES2</i> | 1.16 (1.06, 1.28) | <i>HSF1</i> | 0.85 (0.77, 0.93) |

Notes: Rank no. gene indicates its hierarchy for that particular exposure and gender based on level of significance of the identified association, so gene ranked as no. 1 has the lowest p -value. FC, fold change.

the similarity in the effect estimates, apart for expression of *ARHGAP4* in association with long-term PM₁₀ exposure (see Table S2).

Validation Set

To determine whether gene expression candidate biomarkers identified in the discovery cohort were robust exposure markers, we performed ROC curve analysis with long-term PM₁₀ exposure level 24.5 µg/m³ (75th percentile) as cut-off point in men. Figure 3A shows the sensitivity and 1 minus specificity (false positive ratio) of PM₁₀ exposure levels for men in association with the candidate biomarker genes. The model including the eight genes in men had an area under the curve (AUC) value of 0.92 (95% confidence interval (CI): 0.85, 1.00; *p* = 0.0002). In women the model including the eight genes had an AUC of 0.86 (95% CI: 0.76, 0.96; *p* = 0.004) (Figure 3B, cut-off point 25.7 µg/m³). The combined gene set performed better both in men and women than the individual genes. Similarly, for PM_{2.5} exposure prediction, the model for men had an AUC of 0.91 (95% CI: 0.83, 0.97; *p* = 0.007) (Figure 3C), the model for women had an AUC of 0.90 (95% CI: 0.81, 0.98; *p* = 0.0002) (Figure 3D).

Discussion

We identified and validated transcriptome signatures that are associated with long-term exposure to particulate air pollution in apparently healthy men and women. These sets of eight *sex*-specific genes were predictive of exposure in the validation cohort, and including all eight genes in one model provided a better prediction than the eight genes individually. We found *DNAJB5* and *EAPP* in men and *ARHGAP4* in women based on a discovery set and a validation analysis to be significantly associated with PM₁₀ exposure. Besides *ARHGAP4*, our PM_{2.5}-exposure analysis for women. When analyzing PM_{2.5} exposure, for women, besides *ARHGAP4*, we identified *PYGO2*, *SIRT7*, and *ATG16L2* as significantly associated with particulate matter exposure. *****AU: pls confirm edited text preserves your meaning*****. However, we cannot assume these associations indicate causal relations due to the observational nature of our study. ROC analysis revealed excellent separation between individuals with high and low exposure to long-term particulate air pollution using the genes selected for validation. We believe gene expression levels have the potential to be used as **biomarker** *****AU: biomarkers?***** of exposure and effect with high specificity to link particulate air pollution to its health consequences, as these can be measured at the personal level rather than be obtained through exposure modelling

at the population level. Further studies looking at different age and ethnic groups are warranted to explore the capabilities of gene expression levels as predictors in more depth. Longitudinal studies that monitor disease incidence, exposure and gene expression over time would be excellent to provide more insights.

We observed different transcriptomic expression levels in association with particulate air pollution exposure in men and women. Sex-specific differences may be explained by differences in inflammatory responses between men and women. Immunologic differences between men and women have been reported based on gene expression profiles in blood between smokers and nonsmokers, where women seem to have a more specific (involving less extensive pathways) immunologic response to smoking than men (Faner et al. 2014). Furthermore, sex-specific associations were also reported for microarray expression profiles in relation to environmental exposure to diverse compounds such as PCBs, polychlorinated biphenyls, dioxin, benzene, and PAHs (De Coster et al. 2013). The sex-specific associations between PM and gene expression that we observed are in line with previous reports of sex-specific associations with other exposures. As such, prenatal exposure to bisphenol A (BPA) led to differential responses in murine placenta

of female and male embryos (Imanishi et al. 2003). Prenatal stress exposure in rats was associated with sex-specific differences in gene expression and behavioral effects in male and female offspring (Van den Hove et al. 2013). This study clearly shows the same biological exposure (i.e., prenatal stress) leads to a highly differential response in male and female offspring.

To date, limited human data is available on microarray gene expression profiling in response to air pollution exposure. However, in an attempt to study the effects of *in utero* carcinogenic exposures, gene expression profiles in cord blood from 111 babies participating in the Norwegian BraMat cohort were assessed and correlation analyses of gene expression levels with biomarkers of exposure measured showed variable numbers of significantly correlating genes. Overall, separate analyses for male and female newborns resulted in higher numbers of significantly correlating genes per *sex* with low overlap of similarly expressed genes between the 2 *sexes*, thus indicating a clear *sex*-specific toxicogenomic response. More specifically, the authors reported only 1 gene in common between girls (39 significant genes) and boys (331 significant genes) for dioxin exposure (Hochstenbach et al. 2012).

Given evidence of the differential responses to PM exposure both at the gene

Table 3. The top 5 *sex*-specific pathways defined by gene set enrichment analysis for each indicator of exposure.

| Exposure/pathway | Q-value | # measured/ # genes in pathway |
|--|----------|-----------------------------------|
| Men | | |
| PM ₁₀ | | |
| Response to elevated platelet cytosolic Ca ²⁺ | 3.11E-07 | 76/87 |
| Prolactin signaling pathway | 5.78E-07 | 61/72 |
| Platelet degranulation | 5.90E-07 | 71/82 |
| Leukocyte transendothelial migration | 1.25E-06 | 98/118 |
| Signaling by insulin receptor | 5.18E-06 | 89/109 |
| PM _{2.5} | | |
| Cell-cell communication | 1.35E-08 | 95/130 |
| Chagas disease (American trypanosomiasis) | 1.40E-06 | 92/104 |
| Signaling by type 1 insulin-like growth factor 1 receptor (IGF1R) | 1.40E-06 | 76/96 |
| Signaling by insulin receptor | 1.93E-06 | 96/120 |
| Insulin receptor signaling cascade | 2.33E-06 | 74/76 |
| Women | | |
| PM ₁₀ | | |
| Respiratory electron transport, ATP synthesis by chemiosmotic coupling, and heat production by uncoupling proteins | 2.08E-04 | 89/97 |
| Packaging of telomere ends | 3.98E-04 | 46/53 |
| Electron transport chain | 8.11E-04 | 94/103 |
| Respiratory electron transport | 9.59E-04 | 71/76 |
| Telomere maintenance | 1.50E-03 | 72/81 |
| PM _{2.5} | | |
| Respiratory electron transport | 9.07E-04 | 81/92 |
| Respiratory electron transport, ATP synthesis by chemiosmotic coupling, and heat production by uncoupling proteins | 1.77E-03 | 99/113 |
| Packaging of telomere ends | 4.54E-03 | 45/52 |
| Proteasome | 4.93E-03 | 41/44 |
| Transcriptional regulation by small RNAs | 4.93E-03 | 95/106 |

Pathways were identified using the Gene Set Enrichment Analysis Tool from the online Consensus Pathway Data Base. *****AU: Please provide URL for Consensus Pathway Data Base***Pls define “#”**

and pathway levels between men and women, we hypothesize that different pathways could lead to the same disease outcome in both sexes. Recently, it was reported that the same personal exposure (i.e., smoking) could lead to disease in a differential manner in men and women. As such, Paul et al. and Amundson (2014)(*****AU: Correct?*****) described microarray analysis in smokers and nonsmoking men and women. They utilized a population of 24 middle-aged smoking men ($n = 12$) and women ($n = 12$) and an equal number of nonsmoking controls. The gene set correlated with smoking in men was incapable of separating female smokers from nonsmokers and vice versa. They identified a large number of oncogenic pathway gene sets that were significantly different in female smokers compared with male smokers with Gene Set Enrichment Analysis of microarray data. In addition, functional annotation with Ingenuity Pathway Analysis (IPA) identified smoking-correlated genes

associated with biological functions in male and female smokers that are directly relevant to well-known smoking related pathologies. However, these relevant biological functions were overrepresented in female smokers compared with male smokers. Identified pathway categories in women were xenobiotic metabolism signaling, actin metabolism signaling, clathrin-mediated signaling, eicosanoid signaling, thrombin signaling, tight junction signaling, molecular mechanism of cancer, and natural killer cell signaling (Paul and Amundson 2014).

The expression of *ARHGAP4* was borderline significantly associated with long-term PM₁₀ exposure in women in the discovery cohort, and borderline significant ($p = 0.0535$) in the validation cohort. *ARHGAP4*, *SIRT7*, and *ATG16L2* were furthermore significantly associated with long-term PM_{2.5} exposure in women in the discovery cohort and validation cohort.

ARHGAP4 is a RhoGAP that regulates the cytoskeletal dynamics that controls cell

motility and axon outgrowth (Vogt et al. 2007). Pygopus 2 (*PYGO2*) is a component of the Wnt signaling pathway required for β -catenin/T-cell factor (TCF)-dependent transcription and has been shown to be upregulated in lung cancer both *in vitro* in non-small cell lung cancer cell lines and *in vivo* in human primary tumor tissue samples (Zhou et al. 2014).

In vitro experiments using hematopoietic stem cells from sirtuin 7 (*SIRT7*) knockout mice have shown *SIRT7* regulates mitochondrial activity and its inactivation causes reduced quiescence, increased mitochondrial protein folding stress, and compromised regenerative capacity of hematopoietic stem cells (Mohrin et al. 2015; Liu and Chen 2015). Mitochondrial DNA and function have been shown to be associated with chronic air pollution exposure in populations of newborns (Janssen et al. 2012) and elderly men (Zhong et al. 2016), hence NAD-dependent deacetylase *SIRT7* might provide insight into a molecular

Table 4. Selection of biomarker candidate genes and their fold changes for an increase of 5 $\mu\text{g}/\text{m}^3$ long-term PM₁₀ exposure.

| Gene name | Gene description | Gene function | Link to disease | Discovery cohort FC (95% CI) | <i>p</i> -Value | Validation cohort FC (95% CI) | <i>p</i> -Value | <i>q</i> -Value |
|----------------|--|---|---|---------------------------------|-----------------|----------------------------------|-----------------|-----------------|
| <i>Men</i> | | | | | | | | |
| <i>DNAJB5</i> | DnaJ (Hsp40) homolog, subfamily B, member 5 | Heat shock protein 40 | CVD (Ago et al. 2008) | 1.36 (1.14, 1.63) | 0.0014 | 1.64 (1.20, 2.23) | 0.0026 | 0.02 |
| <i>RAC3</i> | Ras-related C3 botulinum toxin substrate 3 (rho family, small GTP binding protein Rac3) | Regulation of cellular responses (cell growth) | Lung cancer (Liu et al. 2015)(b) | 1.25 (1.04, 1.51) | 0.024 | 1.26 (0.94, 1.96) | 0.10 | 0.18 |
| <i>EAPP</i> | E2F associated phosphoprotein | Cell cycle/apoptosis | Lung cancer (DeMuth et al. 1998) | 1.15 (1.0, 1.24) | 0.00055 | 1.18 (1.02, 1.38) | 0.028 | 0.12 |
| <i>HDLBP</i> | High density lipoprotein binding protein (vigilin) | Sterol metabolism | CVD (Husten 1998) | 1.14 (1.04, 1.24) | 0.0065 | 1.02 (0.88, 1.19) | 0.75 | 0.86 |
| <i>PRG2</i> | Proteoglycan 2 | Eosinophil major basic protein | CVD (Melchior et al. 2013), asthma (Li et al. 2006) | 1.29 (1.07, 1.56) | 0.012 | 1.29 (0.98, 1.71) | 0.066 | 0.18 |
| <i>PER1</i> | Period homolog 1 (Drosophila) | Circadian rhythm | CVD (Young et al. 2001) | 1.19 (1.05, 1.36) | 0.012 | 0.95 (0.74, 1.23) | 0.72 | 0.86 |
| <i>PIK3R1</i> | Phosphoinositide-3-kinase, regulatory subunit 1 (p85 alpha) | Insulin metabolism | Lung cancer (Lu et al. 2006) | 1.22 (1.03, 1.43) | 0.023 | 1.01 (0.82, 1.26) | 0.91 | 0.91 |
| <i>SLA2</i> | Src-like adaptor 2 | SLAP adapter protein | CVD [73] (Cosin-Sales et al. 2004) | 1.22 (1.03, 1.44) | 0.027 | 1.16 (0.97, 1.39) | 0.11 | 0.18 |
| <i>Women</i> | | | | | | | | |
| <i>AKAP6</i> | A kinase (PRKA) anchor protein 6 | Regulatory subunit of protein kinase A | CVD (Oti et al. 2006) | 1.21 (1.07, 1.36) | 0.0036 | 0.72 (0.55–0.94) | 0.017 | 0.05 |
| <i>LIMK1</i> | LIM domain kinase 1 | Regulation of actin filament dynamics | Lung cancer (Chen et al. 2013), Alzheimer's (Heredia et al. 2006) | 1.28 (1.06, 1.55) | 0.01 | 0.75 (0.61–0.91) | 0.0057 | 0.03 |
| <i>SIRT7</i> | Sirtuin (silent mating type information regulation 2 homolog) 7 (<i>S. cerevisiae</i>) | Transcription repressor | CVD (Vakhrusheva et al. 2007–2008)(***AU: Correct?***) | 0.89 (0.82, 0.96) | 0.0038 | 0.80 (0.6–1.07) | 0.14 | 0.22 |
| <i>ARHGAP4</i> | Rho GTPase Activating protein 4 | Regulation of small GTP-binding proteins from the RAS superfamily | Cognition (Huang et al. 2012) | 0.88 (0.81, 0.95) | 0.0035 | 0.62 (0.38–1.00) | 0.054 | 0.11 |
| <i>ATG16L2</i> | Autophagy related 16-like 2 (<i>S. cerevisiae</i>) | Autophagy | CVD (Magné et al. 2015) | 0.81 (0.73, 0.90) | 0.00028 | 0.81 (0.59–1.11) | 0.19 | 0.25 |
| <i>TPM3</i> | Tropomyosin 3 | Actin-binding protein | Lung cancer (Rostila et al. 2012) | 0.65 (0.48, 0.88) | 0.0086 | 1.02 (0.83–1.26) | 0.85 | 0.85 |
| <i>5-HT1B</i> | 5-Hydroxytryptamine (serotonin) receptor 1B | Neurotransmitter/vasoconstriction | CVD (Iwabayashi et al. 2012) | 1.31 (1.08, 1.59) | 0.0097 | 1.28 (0.49–3.34) | 0.62 | 0.71 |
| <i>PYGO2</i> | Pygophus homolog 2 | Related to Wnt signaling | Lung cancer (Liu et al. 2013) | 0.93 (0.85, 1.01) | 0.097 | 0.75 (0.61–0.92) | 0.0078 | 0.03 |

Notes: Models adjusted for age, BMI, SES, smoking (validation cohort), leukocyte and neutrophil count, daytime of blood sampling and season. *p*-Values corrected for multiple testing are represented as *q*-values.

(*****AU: all authors presented are "et al.," except for "Huston 1998," correct?*****)

mechanism underlying the mitochondrial damage following air pollution exposure. Autophagy related 16-like 2 (*ATG16L2*) is a core autophagy gene. Previously, we found in newborns epigenetic modifications in the mitochondrial genome, in association with $PM_{2.5}$ exposure during gestation and placental mtDNA content, which could reflect signs of mitophagy and mitochondrial death (Janssen et al. 2012).

The expression of the genes *DNAJB5* and *EAPP* were significantly associated with PM_{10} air pollution exposure in men, in the discovery cohort, and in the validation cohort. *DNAJB5* is a member of the evolutionarily conserved DNAJ/HSP40 family of proteins, which regulate molecular chaperone activity by stimulating ATPase activity (Ohtsuka and Hata 2000). *DNAJB5* contains a cysteine-rich domain which renders the protein sensitive to ROS. The protein forms a multiprotein complex together with Trx1

and class II histone deacetylases (HDACs) that functions as a master negative regulator of cardiac hypertrophy (Ago et al. 2008). E2F-associated phospho-protein (EAPP) is a nuclear phosphoprotein that interacts with the activating members of the E2F transcription factor family. *In vitro* overexpression of EAPP increased the fraction of G1 cells and led to heightened resistance against DNA damage. EAPP itself becomes upregulated after DNA damage and stimulates the expression of p21 independently of p53 (Andorfer and Rotheneder 2011).

In pathway analyses, we identified several respiratory chain related pathways significantly associated with long-term PM_{10} and $PM_{2.5}$ exposure in women. Rossner et al. (2015) reported deregulation of expression of respiratory chain, oxidative phosphorylation, and mitochondrial membrane pathways when comparing gene expression profiles in adult nonsmoking men from a heavily polluted area

versus a control region in the Czech Republic across different seasons (winter and summer 2009–2009 and winter 2010).**[**AU: pls clarify: do you mean "...[summer (2009) and winter (2010)]."**]**

Although sex-related differences have been observed for different environmental pollutions, to our knowledge, this is the first study on microarray gene expression profiles in association with long-term air pollution exposure among middle aged men and women.

Our study has strengths and limitations. We did our investigations in two independent cohorts for discovery and validation, using the same exposure modeling and used the gold standard qPCR as validation tool (Canales et al. 2006). Although sample size for the discovery cohort was limited, we believe validation in an independent cohort based on a reliable method such as qPCR indicates the robustness of our analyses. Our

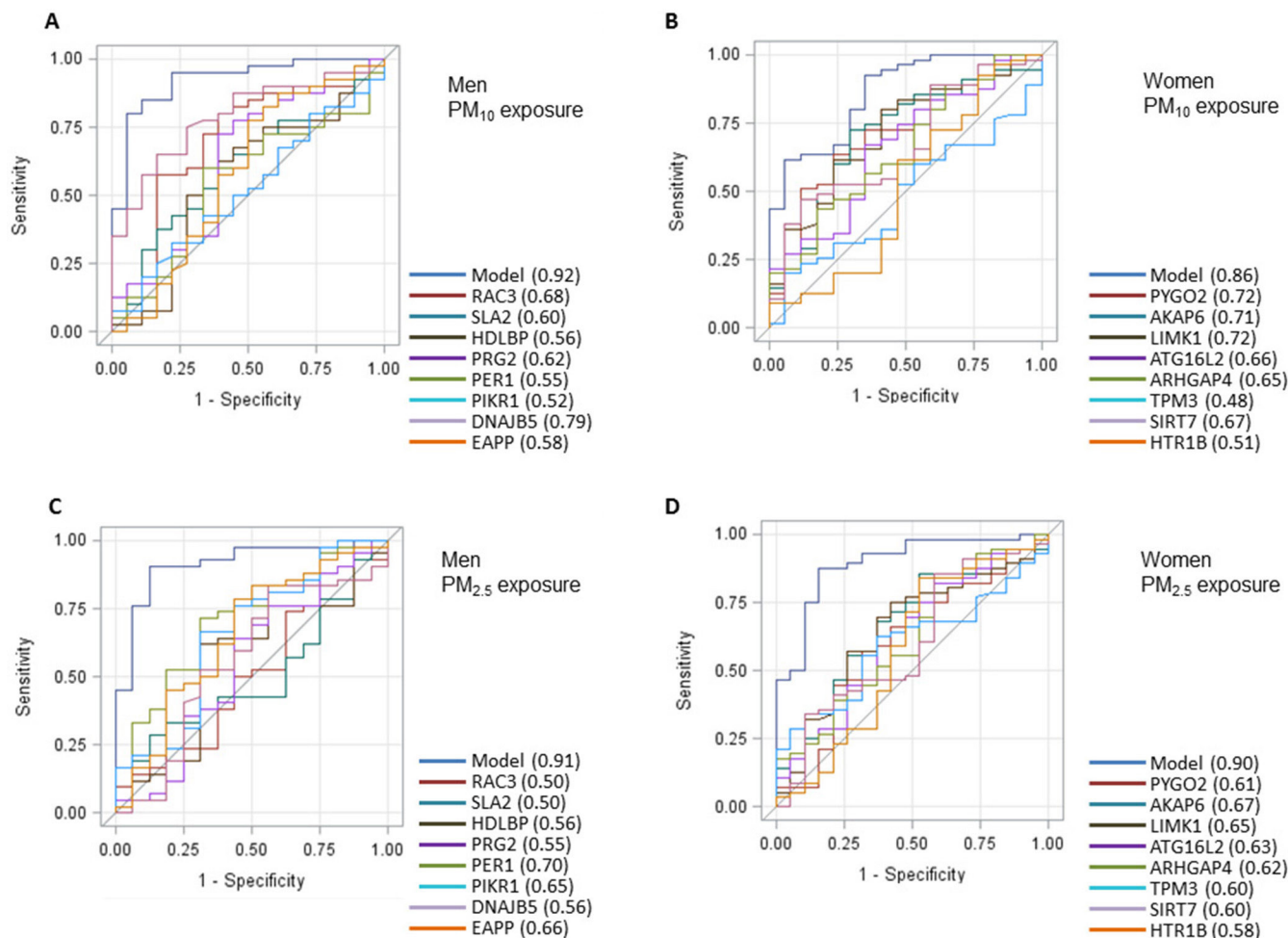


Figure 3. Receiver operating characteristics (ROC) curve for leukocyte gene expression of gene sets distinguishing between high and low long-term PM_{10} or $PM_{2.5}$ exposure, respectively, based on the eight genes selected for validation for each gender. (A) performance of gene set consisting of *DNAJB5*, *RAC3*, *SLA2*, *HDLBP*, *PRG2*, *PER1*, *PIK3R1*, and *EAPP* to distinguish between high and low PM_{10} exposure in men (above 75th percentile corresponding to: $24.5 \mu\text{g}/\text{m}^3$) and low ($< 24.5 \mu\text{g}/\text{m}^3$) and (B) performance of gene set consisting of *ARHGAP4*, *AKAP6*, *PYGO2*, *HTR1B*, *ATG16L2*, *SIRT7*, *TPM3* and *LIMK1* in women to distinguish between high (above 75th percentile corresponding to: $25.7 \mu\text{g}/\text{m}^3$) and low ($< 25.7 \mu\text{g}/\text{m}^3$) long-term residential PM_{10} exposure. (C) performance of same male-specific gene set in men and (D) female-specific gene set in women to distinguish between high (above 75th percentile corresponding to: $16.0 \mu\text{g}/\text{m}^3$) and low ($< 16.0 \mu\text{g}/\text{m}^3$) long-term residential $PM_{2.5}$ exposure.

study also has its limitations inherent to the cross-sectional nature of our study. We used 2010–2012 air pollution data to develop our high-resolution exposure models, which we applied to the participants' baseline addresses (2004). Studies in the Netherlands (Brauer et al. 2003), Italy (Rome) (Rosenlund et al. 2008), the United Kingdom (Briggs et al. 2000), and Canada (Vancouver) (Henderson et al. 2007) have shown that during periods of about 10 years and longer, existing land use regression models predicted historic spatial contrasts well. The use of a relatively homogenous population limits the potential generalizability of our study to populations with different ages, races and ethnicities, or locations. Lastly, our study design did not allow to control for cell counts in the discovery phase of the study. As cell counts were not performed on the samples for microarray analysis, and there is no good means for imputation of these values for Agilent 4 × 44 K arrays during data analysis, we were not able to control for this.

This is the first time levels of gene expression of candidate genes have been used to accurately predict air pollution exposure levels (PM₁₀, PM_{2.5}). For this purpose, we have established ROC curves based on the genes selected for validation in an independent cohort and were able to separate low- (< 75th percentile) from high- (> 75th percentile) exposed individuals. ROC curves are commonly used to compare the diagnostic performance of two or more tests, as they give a good indication of both the sensitivity and specificity of the studied test (Greiner et al. 2000). As such, it has been demonstrated that gene expression signatures can predict survival for instance in pancreatic (Newhook et al. 2014) or non-small cell lung cancer (Lu et al. 2006). In 2009, this technique was applied for the first time in an environmental epidemiology setting, showing that specific DNA methylation patterns could accurately predict the relationship between exposure to airborne PAHs and childhood asthma incidence. Perera et al. (2009) investigated PAH levels in cord blood samples from 20 newborns and replicated the association between PAH levels and candidate region methylation in 56 other newborns from the **CCCEH** **[**AU: pls spell out/define this acronym at first mention**]** cohort that recruits nonsmoking Dominican and African American women and their children residing in different areas of New York in the United States (Perera et al. 2009). However, the application of this approach to the field of gene expression data in association with air pollution exposure is novel.

In ROC curve analysis, an AUC of 0.80 is considered a ROC curve with good separation characteristics, and an AUC of 0.90 is

considered excellent, in its ability to distinguish between true- and false positives. We have identified sex-specific gene-sets that fulfill these criteria for PM₁₀ and PM_{2.5} exposure. However, we must interpret the current set within the context of its limitations inherent to its cross-sectional nature of our study.

Conclusions

In conclusion, microarray analysis has identified different gene-expression levels in response to long-term air pollution in men and women. From gene-level analysis, candidate biomarker genes with a reported link to AP-related disease were selected and validated (i.e., significantly associated with PM exposure with the same direction of regulation of expression) in an independent cohort. For men, we propose *DNAJB5* and *EAPP* as biomarkers of exposure. For women, we identified *ARHGAP4*, *PYGO2*, *SIRT7*, and *ATG16L2* as biomarker genes of exposure. ROC analysis revealed that the genes were able to predict high or low PM₁₀ exposure accurately. Prospective studies in other populations are needed to confirm our findings with regard to sex-specific expression of these genes in association with PM exposure. Furthermore, it would be highly relevant to analyze the gene expression of these sexgender-specific gene-sets in cohorts with higher PM exposure as well as in subjects at different stages of life, including the more vulnerable stages such as early childhood and puberty.

REFERENCES

- Ago T, Liu T, Zhai P, Chen W, Li H, Molkenin JD, et al. 2008. A redox-dependent pathway for regulating class II HDACs and cardiac hypertrophy. *Cell* 133(6):978–993. **(**AU: Correct reference for "Ago 2008" in text**)**
- Alfaro-Moreno E, Nawrot TS, Nemmar A, Nemery B. 2007. Particulate matter in the environment: pulmonary and cardiovascular effects. *Curr Opin Pulm Med* 13(2):98–106.
- Andorfer P, Rotheneder H. 2011. EAPP: gatekeeper at the crossroad of apoptosis and p21-mediated cell-cycle arrest. *Oncogene* 30(23):2679–2690.
- Bowatte G, Lodge C, Lowe AJ, Erbas B, Perret J, Abramson MJ, et al. 2015. The influence of childhood traffic-related air pollution exposure on asthma, allergy and sensitization: a systematic review and a meta-analysis of birth cohort studies. *Allergy* 70(3):245–256.
- Brauer M, Hoek G, van Vliet P, Meliefste K, Fischer P, Gehring U, et al. 2003. Estimating long-term average particulate air pollution concentrations: application of traffic indicators and geographic information systems. *Epidemiology* 14:228–239.
- Briggs DJ, de Hoogh C, Gulliver J, Willis J, Elliott P, Kingham S, et al. 2000. A regression-based method for mapping traffic-related air pollution: application and testing in four contrasting urban environments. *Sci Total Environ* 253(1–3):151–167.
- Bustin SA, Benes V, Garson JA, Helleman J, Huggett J, Kubista M, et al. 2009. The MIQE guidelines: minimum information for publication of quantitative real-time PCR experiments. *Clin Chem* 55(4):611–622.
- Canales RD, Luo Y, Willey JC, Austermiller B, Barbacioru CC, Boysen C, et al. 2006. Evaluation of DNA microarray results with quantitative gene expression platforms. *Nat Biotechnol* 24(9):1115–1122.
- Chen JC, Schwartz J. 2009. Neurobehavioral effects of ambient air pollution on cognitive performance in US adults. *Neurotoxicology* 30(2):231–239. **(**AU: Reference "Chen and Schwartz 2009" is not cited in the text. Please add an in-text citation or delete the reference.**)**
- Chen Q, Jiao D, Hu H, Song J, Yan J, Wu L, et al. 2013. Downregulation of LIMK1 level inhibits migration of lung cancer cells and enhances sensitivity to chemotherapy drugs. *Oncol Res* 20(11):491–498. **(**AU: Correct reference for "Chen 2013" in text**)**
- Cosemans G, Kretzschmar JG, De Baere G, Vandervee J. 1982. Large scale validation of a bi-gaussian dispersion model in a multiple source urban and industrial area. In: *Air Pollution Modeling and Its Application II*. De Wispelaere C, ed. New York, NY:Plenum Press, 709–728. **(**AU: Reference "Cosemans et al. 1982" is not cited in the text. Please add an in-text citation or delete the reference.**)**
- Cosemans G, Kretzschmar J, Janssen L, Maes G. 1995. The Third Workshop's environmental impact assessment model intercomparison exercise. *Int J Environ Pollution* 5(4–6):785–798.
- Cosemans G, Ruts R, Kretzschmar JG. 2001. Impact assessment with the Belgian dispersion model IFDM and the New Dutch National Model. In: *Proceedings of the 7th International Conference on Harmonisation within Atmospheric Dispersion Modelling for Regulatory Purposes, 28–31 May 2001, Belgirate, Italy*. Belgirate, Italy:JRC-EI (Institutes of the European Commission's Joint Research Centre), 125–129.
- Cosin-Sales J, Christiansen M, Kaminski P, Oxvig C, Overgaard MT, Cole D, et al. 2004. Pregnancy-associated plasma protein A and its endogenous inhibitor, the proform of eosinophil major basic protein (proMBP), are related to complex stenosis morphology in patients with stable angina pectoris. *Circulation* 109(14):1724–1728. **(**AU: Correct reference for "Cosin-Sales 2004" in text**)**
- Dadvand P, Nieuwenhuijsen MJ, Esnaola M, Fornes J, Basagaña X, Basagaña X, Alvarez-Pedrerol M, et al. 2015. Green spaces and cognitive development in primary schoolchildren. *Proc Natl Acad Sci U S A* 112(26):7937–7942.
- De Boever P, Louwies T, Provost E, Int Panis L, Nawrot TS. 2014. Fundus photography as a convenient tool to study microvascular responses to cardiovascular disease risk factors in epidemiological studies. *Journal of visualized experiments: JoVE* (92):J Vis Exp 92:e51904. doi: 10.3791/51904. **(**AU: Reference "De Boever et al. 2014" is not cited in the text. Please add an in-text citation or delete the reference.**)**
- De Coster S, van Leeuwen DM, Jennen DG, Koppen G, Den Hond E, Nelen V, et al. 2013. Gender-specific transcriptomic response to environmental exposure in Flemish adults. *Environ Mol Mutagen* 54(7):574–588.
- de Curtis I. 2008. Functions of Rac GTPases during

- neuronal development. *Dev Neurosci* 30(1–3):47–58. *****AU: Reference “de Curtis 2008” is not cited in the text. Please add an in-text citation or delete the reference.*****
- DeMuth JP, Jackson CM, Weaver DA, Crawford EL, Durzinsky DS, Durham SJ, et al. 1998. The gene expression index *c-myc* × *E2F-1/p21* is highly predictive of malignant phenotype in human bronchial epithelial cells. *Am J Respir Cell Mol Biol* 19(1):18–24. *****AU: Correct reference for “DeMuth 1998” in text?*****
- Doherty CJ, Kay SA. 2010. Circadian control of global gene expression patterns. *Annu Rev Genet* 44:419–444. *****AU: Reference “Doherty and Kay 2010” is not cited in the text. Please add an in-text citation or delete the reference.*****
- Donaldson K, Tran L, Jimenez LA, Duffin R, Newby DE, Mills N, et al. 2005. Combustion-derived nanoparticles: a review of their toxicology following inhalation exposure. *Part Fibre Toxicol* 2:10. doi: 10.1186/1743-8977-2-10.
- Faner R, Gonzalez N, Cruz T, Kalko SG, Agustí-A Agustí A. 2014. Systemic inflammatory response to smoking in chronic obstructive pulmonary disease: evidence of a gender effect. *PLoS One* 9(5):e97491. doi: 10.1371/journal.pone.0097491.
- Fink SP, Yamauchi M, Nishihara R, Jung S, Kuchiba A, Wu K, et al. 2014. Aspirin and the risk of colorectal cancer in relation to the expression of 15-hydroxyprostaglandin dehydrogenase (HPGD). *Sci Transl Med* 6(233):233re2. doi: 10.1126/scitranslmed.3008481.233re232.
- Finkelstein MM, Jerrett M. 2007. A study of the relationships between Parkinson's disease and markers of traffic-derived and environmental manganese air pollution in two Canadian cities. *Environ Res* 104(3):420–432. *****AU: Correct reference for “Finkelstein and Jerrett” (undated) in text?*****
- Fujii T, Hayashi S, Hogg JC, Mukae H, Suwa T, Goto Y, et al. 2002. Interaction of alveolar macrophages and airway epithelial cells following exposure to particulate matter produces mediators that stimulate the bone marrow. *Am J Respir Cell Mol Biol* 27(1):34–41.
- Greiner M, Pfeiffer D, Smith RD. 2000. Principles and practical application of the receiver-operating characteristic analysis for diagnostic tests. *Prev Vet Med* 45(1–2):23–41.
- Hellemans J, Mortier G, De Paeppe A, Speleman F, Vandesompele J. 2007. qBase relative quantification framework and software for management and automated analysis of real-time quantitative PCR data. *Genome Biol* 8(2):R19. doi: 10.1186/gb-2007-8-2-r19.
- Henderson SB, Beckerman B, Jerrett M, Brauer M. 2007. Application of land use regression to estimate long-term concentrations of traffic-related nitrogen oxides and fine particulate matter. *Environ Sci Technol* 41:2422–2428.
- Heredia L, Helguera P, de Olmos S, Kedikian G, Solá Vigo F, LaFerla F, et al. 2006. Phosphorylation of actin-depolymerizing factor/cofilin by LIM-kinase mediates amyloid β -induced degeneration: a potential mechanism of neuronal dystrophy in Alzheimer's disease. *The Journal of neuroscience: the official journal of the Society for Neuroscience* J Neurosci 26(24):6533–6542. *****AU: Correct reference for “Heredia 2006” in text?*****
- Hochstenbach K, van Leeuwen DM, Gmuender H, Gottschalk RW, Levik M, Levik M, Granum B, et al. 2012. Global gene expression analysis in cord blood reveals gender-specific differences in response to carcinogenic exposure *in utero*. *Cancer Epidemiol Biomarkers Prev* 21(10):1756–1767.
- Huang L, Poke G, Gecz J, Gibson K. 2012. A novel contiguous gene deletion of *AVPR2* and *ARHGAP4* genes in male dizygotic twins with nephrogenic diabetes insipidus and intellectual disability. *Am J Med Genet A* 158A(10):2511–2518. *****AU: Correct reference for “Huang 2012” in text?*****
- Huang YC, Schmitt M, Yang Z, Que LG, Stewart JC, Frampton MW, et al. 2010. Gene expression profile in circulating mononuclear cells after exposure to ultrafine carbon particles. *Inhal Toxicol* 22(10):835–846.
- Husten L. 1998. More data reported for HDL's role in heart disease. *Lancet* 352(9140):1603. doi: 10.1016/S0140-6736(98)00065-8.
- Imanishi S, Manabe N, Nishizawa H, Morita M, Sugimoto M, Iwahori M, et al. 2003. Effects of oral exposure of bisphenol A on mRNA expression of nuclear receptors in murine placenta assessed by DNA microarray. *The Journal of reproduction and development J Reprod Dev* 49(4):329–336.
- Iwabayashi M, Taniyama Y, Sanada F, Azuma J, Iekushi K, Kusunoki H, et al. 2012. Role of serotonin in angiogenesis: induction of angiogenesis by sarpogrelate via endothelial 5-HT1B/Akt/eNOS pathway in diabetic mice. *Atherosclerosis* 220(2):337–342. *****AU: Correct reference for “Iwabayashi 2012” in text?*****
- Jacobs L, Emmerechts J, Mathieu C, Hoylaerts MF, Fierens F, Hoet PH, et al. 2010. Air pollution related prothrombotic changes in persons with diabetes. *Environ Health Perspect* 118:191–196. doi: 10.1289/ehp.0900942.
- Jang I, Jeon BT, Jeong EA, Kim EJ, Kang D, Lee JS, et al. 2012. Pak1/LIMK1/Cofilin pathway contributes to tumor migration and invasion in human non-small cell lung carcinomas and cell lines. *Korean J Physiol Pharmacol* 16(3):159–165. *****AU: Reference “Jang et al. 2012” is not cited in the text. Please add an in-text citation or delete the reference.*****
- Janssen BG, Munters E, Pieters N, Smeets K, Cox B, Cuypers A, et al. 2012. Placental mitochondrial DNA content and particulate air pollution during *in utero* life. *Environ Health Perspect* 120:1346–1352. doi: 10.1289/ehp.1104458.
- Janssen S, Dumont G, Fierens F, Mensink C. 2008. Spatial interpolation of air pollution measurements using CORINE land cover data. *Atmospheric Environment Atmos Environ* 42(20):4884–4903.
- Johnson JY, Rowe BH, Villeneuve PJ. 2010. Ecological analysis of long-term exposure to ambient air pollution and the incidence of stroke in Edmonton, Alberta, Canada. *Stroke* 41(7):1319–1325.
- Kalkstein LS, Valimont KM. 1986. An evaluation of summer discomfort in the United-States using a relative climatological index. *Bull Am Meteorol Soc* 67(7):842–848.
- Kamburov A, Stelzl U, Lehrach H, Herwig R. 2012–2013. The ConsensusPathDB interaction database: 2013 update. *Nucleic Acids Res* 41(database issue):D793–D800.
- Kleensang A, Maertens A, Rosenberg M, Fitzpatrick S, Lamb J, Auerbach S, et al. 2014. 1st workshop report: Pathways of Toxicity. *ALTEX* 31(1):53–61.
- Ko FW, Tam W, Wong TW, Chan DP, Tung AH, Lai CK, et al. 2007. Temporal relationship between air pollutants and hospital admissions for chronic obstructive pulmonary disease in Hong Kong. *Thorax* 62(9):780–785.
- La Rocca C, Tait S, Guerranti C, Busani L, Ciardo F, Bergamasco B, et al. 2014. Exposure to endocrine disruptors and nuclear receptor gene expression in infertile and fertile women from different Italian areas. *Int J Environ Res Public Health* 11(10):10146–10164.
- Lefebvre W, Van Poppel M, Maiheu B, Janssen S, Dons E-JS. 2013. Evaluation of the RIO-IFDM-street canyon model chain. *Atmos Environ* 77:325–337.
- Li SH, Luo YL, Lai WY. 2006. Expression of eosinophil major basic protein mRNA in bronchial asthma [in Chinese]. *Journal of Southern Medical University Nan Fang Yi Ke Da Xue Xue Bao* 26(9):1330–1333. *****ED: Correct reference for “Li 2006” in text?*****
- Lin YC, Koleske AJ. 2010. Mechanisms of synapse and dendrite maintenance and their disruption in psychiatric and neurodegenerative disorders. *Annu Rev Neurosci* 33:349–378. *****ED: Reference “Lin and Koleske 2010” is not cited in the text. Please add an in-text citation or delete the reference.*****
- Liu JP, Chen R. 2015a–2015. Stressed SIRT7: facing a crossroad of senescence and immortality. *Clin Exp Pharmacol Physiol* 42(6):567–569.
- Liu TQ, Wang GB, Li ZJ, Tong XD, Liu HX. 2015b–2015. Silencing of Rac3 inhibits proliferation and induces apoptosis of human lung cancer cells. *Asian Pac J Cancer Prev* 16(7):3061–3065.
- Liu Y, Dong QZ, Wang S, Fang CQ, Miao Y, Wang L, et al. 2013. Abnormal expression of Pygopus 2 correlates with a malignant phenotype in human lung cancer. *BMC Cancer* 13:346. doi: 10.1186/1471-2407-13-346. *****AU: Correct reference for “Liu 2013” in text?*****
- Ljubimova JV, Kleinman MT, Karabalin NM, Inoue S, Konda B, Gangalum P, et al. 2013. Gene expression changes in rat brain after short and long exposures to particulate matter in Los Angeles basin air: comparison with human brain tumors. *Exp Toxicol Pathol* 65(7–8):1063–1071. *****AU: Reference “Ljubimova et al. 2013” is not cited in the text. Please add an in-text citation or delete the reference.*****
- Lu Y, Lemon W, Liu PY, Yi Y, Morrison C, Yang P, et al. 2006. A gene expression signature predicts survival of patients with stage I non-small cell lung cancer. *PLoS Med* 3(12):e467. doi: 10.1371/journal.pmed.0030467. *****AU: Correct reference for “Lu 2006” in text?*****
- Maes G, Cosemans G, Kretzschmar J, Janssen L, Van Tongerloo J. 1995. Comparison of six Gaussian dispersion models used for regulatory purposes in different countries of the EU. *Int J Environ Pollution* 5(4–6):734–747.
- Magne J, Magné J, Gustafsson P, Jin H, Maegdefessel L, Hultenby K, Wernerson A, et al. 2015. ATG16L1 Expression in carotid atherosclerotic plaques is associated with plaque vulnerability. *Arterioscler Thromb Vasc Biol* 35(5):1226–1235. *****AU: Correct reference for “Magne 2015” in text?*****
- Magnussen H, Jørrres R, Jørrres R, Nowak D. 1993. Effect of air pollution on the prevalence of asthma and allergy: lessons from the German reunification. *Thorax* 48(9):879–881.
- Maiheu B, Veldeman B, Viaene P, De Ridde K, De Ridder K, Lauwaet D, Smeets N, et al. 2013. Identifying the Best Available Large-Scale Concentration Maps for Air Quality in Belgium [in Dutch]. *Flanders Environment Report*. [http://www.milieurapport.be/Upload/

- main/0_onderzoeksrapporten/2013/Eindrapport_Concentratiekaarten_29_01_2013_TW.pdf [accessed DAY? MONTH? YEAR?]. (**AU: Please provide access date.**)
- Melchior JT, Sawyer JK, Kelley KL, Shah R, Wilson RD, Wilson MD, Hantgan RR, et al. 2013. LDL particle core enrichment in cholesteryl oleate increases proteoglycan binding and promotes atherosclerosis. *Journal of lipid research* **J Lipid Res** 54(9):2495–2503. (**AU: Correct reference for “Melchior 2013” in text?**)
- Mensink C, Maes G. 1996. Comparative sensitivity study for operational short-range atmospheric dispersion models. *Int J Environ Pollution* 8(3–6):356–366. (**AU: Correct reference for “Mensink et al. 1996” in text?**)
- Mills NL, Donaldson K, Hadoke PW, Boon NA, MacNee W, Cassee FR, et al. 2009. Adverse cardiovascular effects of air pollution. *Nat Clin Pract Cardiovasc Med* 6(1):36–44.
- Mohrin M, Shin J, Liu Y, Brown K, Luo H, Xi Y, et al. 2015. Stem cell aging. A mitochondrial UPR-mediated metabolic checkpoint regulates hematopoietic stem cell aging. *Science* 347(6228):1374–1377.
- Montaner D, Farraga J, Tarraga J, Huerta-Cepas J, Burguet J, Vaquerizas JM, Conde L, et al. 2006. Next station in microarray data analysis: GEPAS. *Nucleic Acids Res* 34(web server issue):W486–W491.
- Nel AE, Diaz-Sanchez D, Li N. 2001. The role of particulate pollutants in pulmonary inflammation and asthma: evidence for the involvement of organic chemicals and oxidative stress. *Curr Opin Pulm Med* 7(1):20–26.
- Newhook TE, Blais EM, Lindberg JM, Adair SJ, Xin W, Lee JK, et al. 2014. A thirteen-gene expression signature predicts survival of patients with pancreatic cancer and identifies new genes of interest. *PLoS One* 9(9):e105631, doi: 10.1371/journal.pone.0105631.
- Ohtsuka K, Hata M. 2000. Mammalian HSP40/DNAJ homologs: cloning of novel cDNAs and a proposal for their classification and nomenclature. *Cell Stress Chaperones* 5(2):98–112.
- Oldenburger A, Poppinga WJ, Kos F, de Bruin HG, Rijks WF, Heijink IH, et al. 2014. A-kinase anchoring proteins contribute to loss of E-cadherin and bronchial epithelial barrier by cigarette smoke. *Am J Physiol Cell Physiol* 306(6):C585–C597. (**AU: Reference “Oldenburger et al. 2014” is not cited in the text. Please add an in-text citation or delete the reference.**)
- Olesen H. 1995. The model validation exercise at Mol: overview of results. *Int J Environ Pollution* 5(4–6):761–784.
- Oti M, Snel B, Huynen MA, Brunner HG. 2006. Predicting disease genes using protein-protein interactions. *J Med Genet* 43(8):691–698. (**AU: Correct reference for “Oti 2006” in text?**)
- Paul S, Amundson SA. 2014. Differential effect of active smoking on gene expression in male and female smokers. *J Carcinog Mutagen* 5:1000198, doi: 10.4172/2157-2518.1000198. (**AU: Correct reference for “Paul et al. 2014” in text?**)
- Perera F, Tang WY, Herbstman J, Tang D, Levin L, Miller R, et al. 2009. Relation of DNA methylation of 5'-CpG island of *ACSL3* to transplacental exposure to airborne polycyclic aromatic hydrocarbons and childhood asthma. *PLoS One* 4(2):e4488, doi: 10.1371/journal.pone.0004488.
- Pettit AP, Brooks A, Laumbach R, Fiedler N, Wang Q, Strickland PO, et al. 2012. Alteration of peripheral blood monocyte gene expression in humans following diesel exhaust inhalation. *Inhal Toxicol* 24(3):172–181.
- Pope CA III, Burnett RT, Thurston GD, Thun MJ, Calle EE, Krewski D, et al. 2004. Cardiovascular mortality and long-term exposure to particulate air pollution: epidemiological evidence of general pathophysiological pathways of disease. *Circulation* 109(1):71–77.
- Power MC, Weisskopf MG, Alexeeff SE, Coull BA, Spiro A III, Schwartz J. 2011. Traffic-related air pollution and cognitive function in a cohort of older men. *Environ Health Perspect* 119:682–687, doi: 10.1289/ehp.1002767. (**AU: Reference “Power et al. 2011” is not cited in the text. Please add an in-text citation or delete the reference.**)
- Raaschou-Nielsen O, Andersen ZJ, Hvidberg M, Jensen SS, Ketzel M, Sørensen M-Sørensen M, et al. 2011. Lung cancer incidence and long-term exposure to air pollution from traffic. *Environ Health Perspect* 119:860–865, doi: 10.1289/ehp.1002353.
- Raz L, Zhang QG, Zhou CF, Han D, Gulati P, Yang LC, et al. 2010. Role of Rac1 GTPase in NADPH oxidase activation and cognitive impairment following cerebral ischemia in the rat. *PLoS One* 5(9):e12606, doi: 10.1371/journal.pone.0012606. (**AU: Reference “Raz et al. 2010” is not cited in the text. Please add an in-text citation or delete the reference.**)
- Roepstorff K, Rasmussen I, Sawada M, Cudre-Maroux C, Salmon P, Bokoch G, et al. 2008. Stimulus-dependent regulation of the phagocyte NADPH oxidase by a VAV1, Rac1, and PAK1 signaling axis. *J Biol Chem* 283(12):7983–7993. (**AU: Reference “Roepstorff et al. 2008” is not cited in the text. Please add an in-text citation or delete the reference.**)
- Rosenlund M, Forastiere F, Stafoggia M, Porta D, Perucci M, Ranzi A, Nussio F, Perucci CA et al. 2008. Comparison of regression models with land-use and emissions data to predict the spatial distribution of traffic-related air pollution in Rome. *J Expo Sci Environ Epidemiol* 18:192–199.
- Rossner P Jr, Tulupova E, Rossnerova A, Libalova H, Honkova K, Gmuender H, et al. 2015. Reduced gene expression levels after chronic exposure to high concentrations of air pollutants. *Mutat Res* 780:60–70.
- Rostila A, Puustinen A, Toljamo T, Vuopala K, Lindström I, Nyman TA, et al. 2012. Peroxiredoxins and tropomyosins as plasma biomarkers for lung cancer and asbestos exposure. *Lung Cancer* 77(2):450–459. (**AU: Correct reference for “Rostila 2012” in text?**)
- Scott RW, Olson MF. 2007. LIM kinases: function, regulation and association with human disease. *J Mol Med (Berl)* 85(6):555–568. (**AU: Reference “Scott and Olson 2007” is not cited in the text. Please add an in-text citation or delete the reference.**)
- Steadman RG. 1979. Assessment of sultriness. Part 1. A temperature-humidity index based on human physiology and clothing science. *Journal of Applied Meteorology* 18(7):861–873. (**AU: Pls confirm change to title is correct?**)
- Vakhrusheva O, Smolka C, Gajawada P, Kostin S, Boettger T, Kubin T, et al. 2008. Sirt7 increases stress resistance of cardiomyocytes and prevents apoptosis and inflammatory cardiomyopathy in mice. *Circ Res* 102(6):703–710. (**AU: Correct reference for “Vakhrusheva 2007” in text?**)
- van Breda SG, Wilms LC, Gaj S, Jennen DG, Briedé JJ, Kleinjans JC, et al. 2015. The exposome concept in a human nutrigenomics study: evaluating the impact of exposure to a complex mixture of phytochemicals using transcriptomics signatures. *Mutagenesis* 30(6):723–731.
- Van den Hove DL, Kenis G, Brass A, Opstelten R, Rutten BP, Bruschettini M, et al. 2013. Vulnerability versus resilience to prenatal stress in male and female rats; implications from gene expression profiles in the hippocampus and frontal cortex. *Eur Neuropsychopharmacol* 23(10):1226–1246.
- van Leeuwen DM, Gottschalk RW, Schoeters G, van Larebeke NA, Nelen V, Baeyens WF, et al. 2008. Transcriptome analysis in peripheral blood of humans exposed to environmental carcinogens: a promising new biomarker in environmental health studies. *Environ Health Perspect* 116:1519–1525, doi: 10.1289/ehp.11401.
- Vineis P, van Vek-Veldhoven K, Chadeau-Hyam M, Athersuch TJ. 2013. Advancing the application of omics-based biomarkers in environmental epidemiology. *Environ Mol Mutagen* 54(7):461–467.
- Vogt DL, Gray CD, Young WS III, Orellana SA, Malouf AT. 2007. ARHGAP4 is a novel RhoGAP that mediates inhibition of cell motility and axon outgrowth. *Mol Cell Neurosci* 36(3):332–342.
- Weuve J, Puett RC, Schwartz J, Yanosky JD, Laden F, Grodstein F. 2012. Exposure to particulate air pollution and cognitive decline in older women. *Arch Intern Med* 172(3):219–227. (**AU: Reference “Weuve et al. 2012” is not cited in the text. Please add an in-text citation or delete the reference.**)
- Young ME, Razeghi P, Taegtmeier H. 2001. Clock genes in the heart: characterization and attenuation with hypertrophy. *Circulation-research-Circ Res* 88(11):1142–1150. (**AU: Correct reference for “Young 2001” in text?**)
- Zhong J, Cayir A, Trevisi L, Sanchez-Guerra M, Lin X, Peng C, et al. 2016. Traffic-related air pollution, blood pressure, and adaptive response of mitochondrial abundance. *Circulation* 133(4):378–387.
- Zhou SY, Xu ML, Wang SQ, Zhang F, Wang L, Wang HQ. 2014. Overexpression of Pygopus-2 is required for canonical Wnt activation in human lung cancer. *Oncol Lett* 7(1):233–238.
- Zhu X, Raina AK, Bouch H, Simmons ZL, Takeda A, Smith MA. 2000. Activation of oncogenic pathways in degenerating neurons in Alzheimer disease. *Int J Dev Neurosci* 18(4–5):433–437. (**AU: Reference “Zhu et al. 2000” is not cited in the text. Please add an in-text citation or delete the reference.**)